

# Engaging with Vermont's Data Ecosystem

Michael Moser, Center for Rural Studies and VT State Data Center

Emma Spett, UVM Leahy Institute for Rural Partnerships

Reverend Arnold Thomas, Con Hogan Committee

Diana Wahle, Con Hogan Committee

# Agenda

Who are we?

What is data? What is a data ecosystem?

Building a data ecosystem in VT

Discussion questions

Keeping in touch

# Who Are We?

**THE CON HOGAN AWARD**  
for Creative, Entrepreneurial,  
Community Leadership



University  
of Vermont

Leahy Institute  
for Rural Partnerships



# Leahy Institute for Rural Partnerships at UVM

**Mission:** The Leahy Institute for Rural Partnerships will operate alongside the Office of Engagement with the mission to provide engagement opportunities and partnerships with the University of Vermont for the benefit of our rural places.

**Vision:** We envision a Vermont where all communities can thrive.



**Advance UVM  
engagement in VT**



**Facilitate high-  
quality partnerships**



**Make an impact**

# Leahy Institute Key Functions

## Capacity Grants

- \$10k grants
- Cohort model to develop partnerships
- Support for future seed grant proposals

## Seed Grants

- \$10-250k grants
- Supports partnership-driven rural development projects

Data Services

Partnerships for Rural Capacity

Student Engagement for a Resilient VT

Community Resilience Summer Internship Program

Partners in Place Seminar/Podcast

# The Center for Rural Studies & VT's Census State Data Center

The Center for Rural Studies at the University of Vermont is a research and resource center that works with people and communities to address social, economic, and resource-based challenges. CRS collaborates with small businesses, academics, community organizers, health and social service organizations, planners, town governments, and state and federal agencies to provide assistance with:

Survey Research – Focus Groups- Program Evaluation- Community Data-  
Community Planning- Outreach & Capacity Building

The VT SDC is a liaison for the U.S. Census Bureau and Vermont data users that:

Conducts Data Trainings- Responds to Data Requests- Provides Data Access-  
Assists with Census Data Collection

# Con Hogan Committee



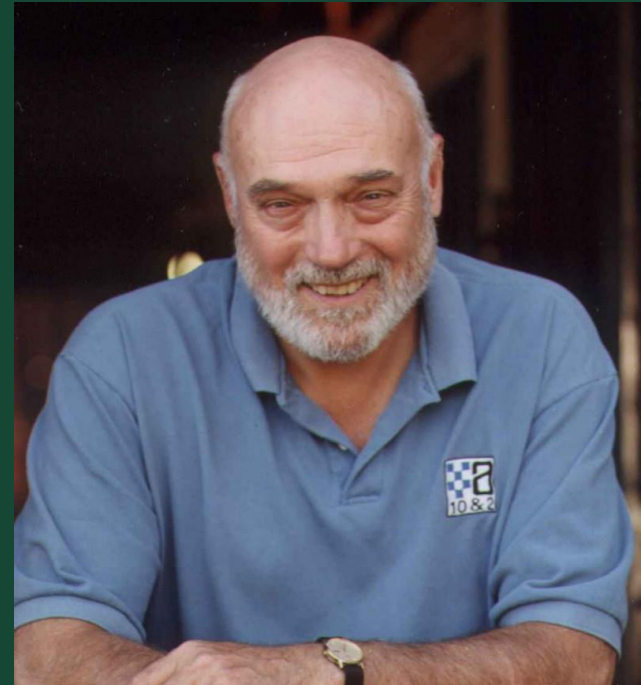
## THE CON HOGAN AWARD

for Creative, Entrepreneurial,  
Community Leadership

Nominations for the \$15,000, 2024 Con Hogan Award can be made online at [vermontcf.org/conhogan](https://vermontcf.org/conhogan). The deadline is June 27, 2024.

*Recognizing Vermonters whose work advances the public good by:*

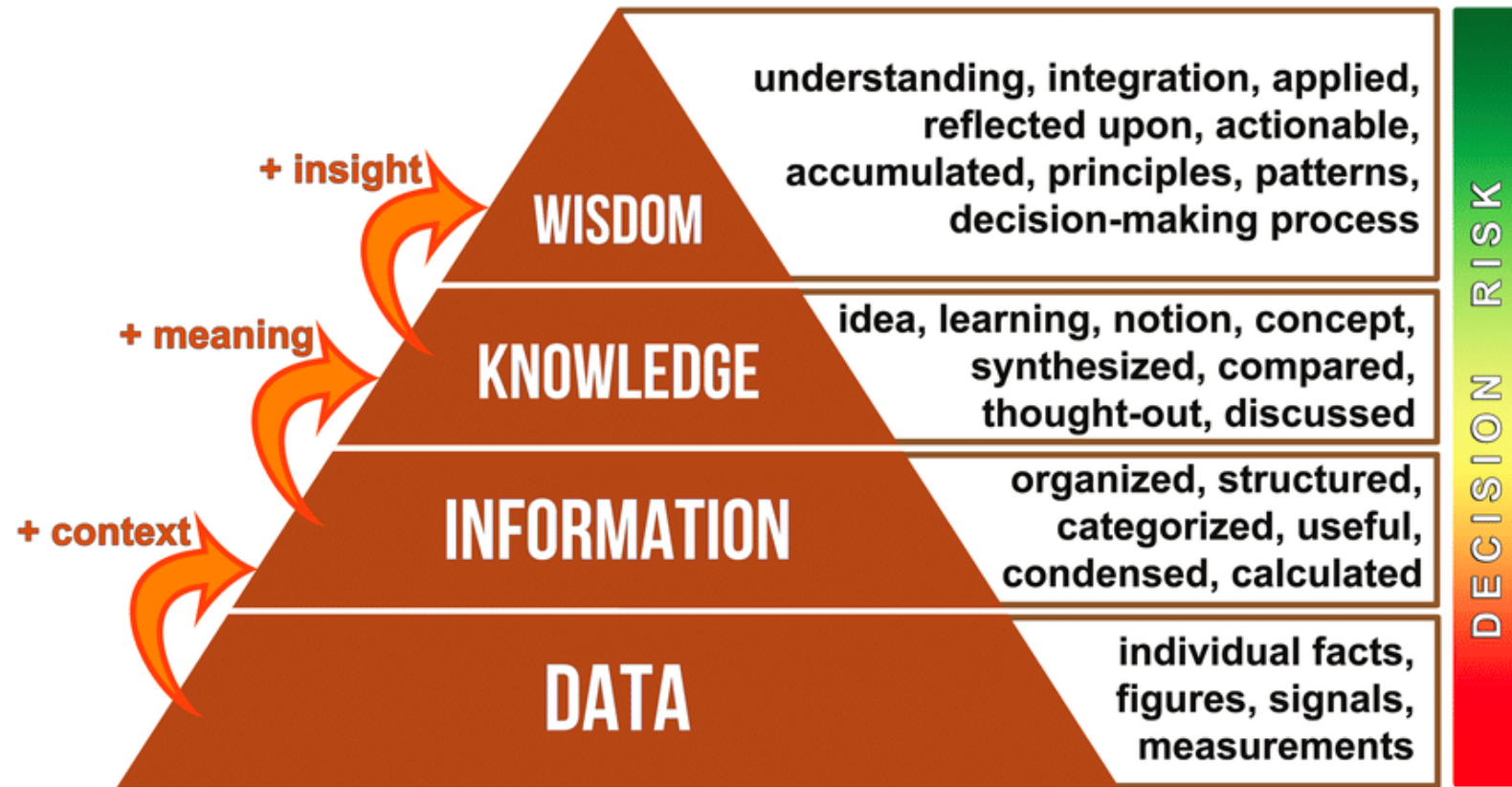
- Focusing on Results
- Working with People Across Diverse Perspectives
- Taking Risks in Pursuit of a Vision
- Persisting through Setbacks



# What is Data?

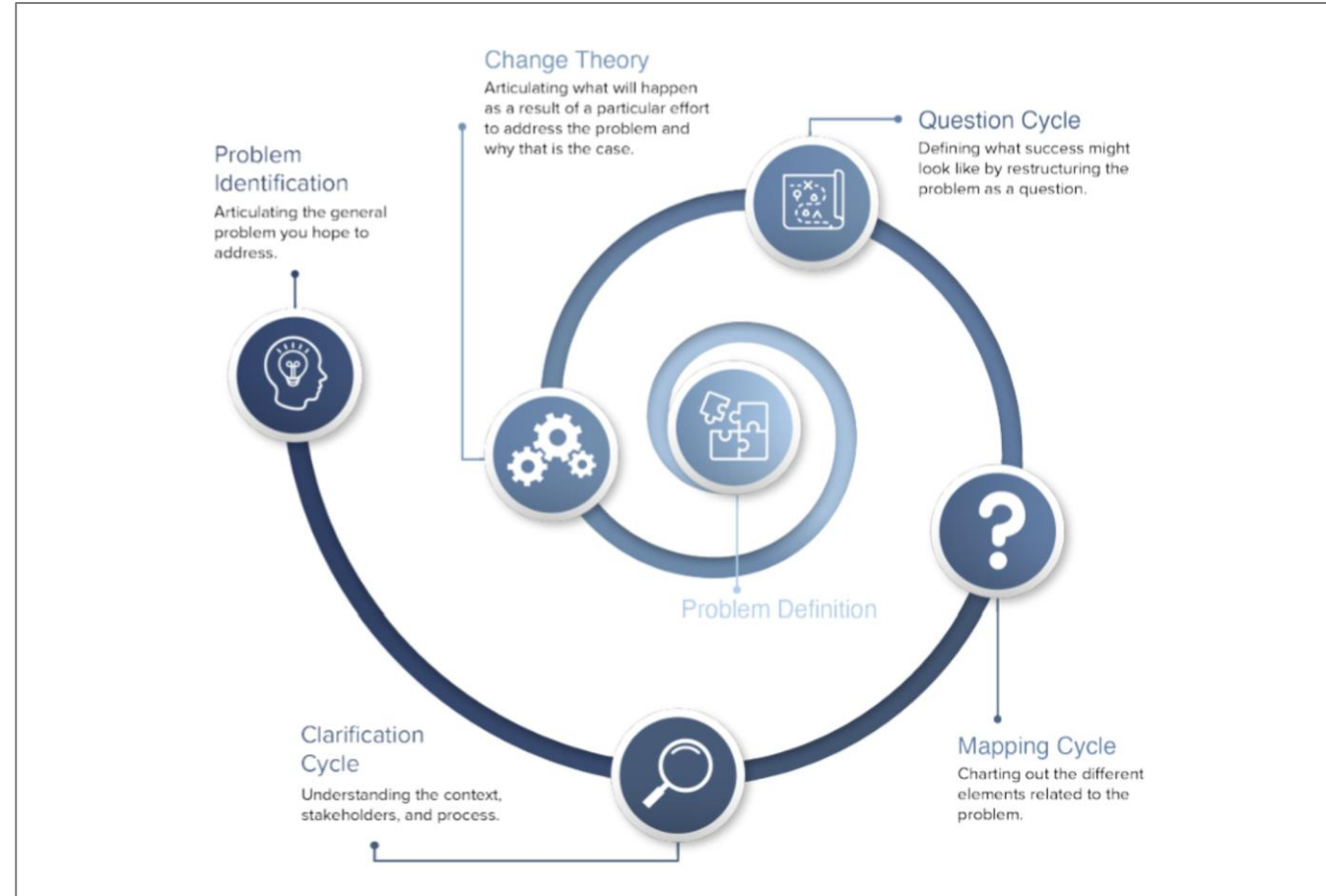
DIKW framework

Definitions

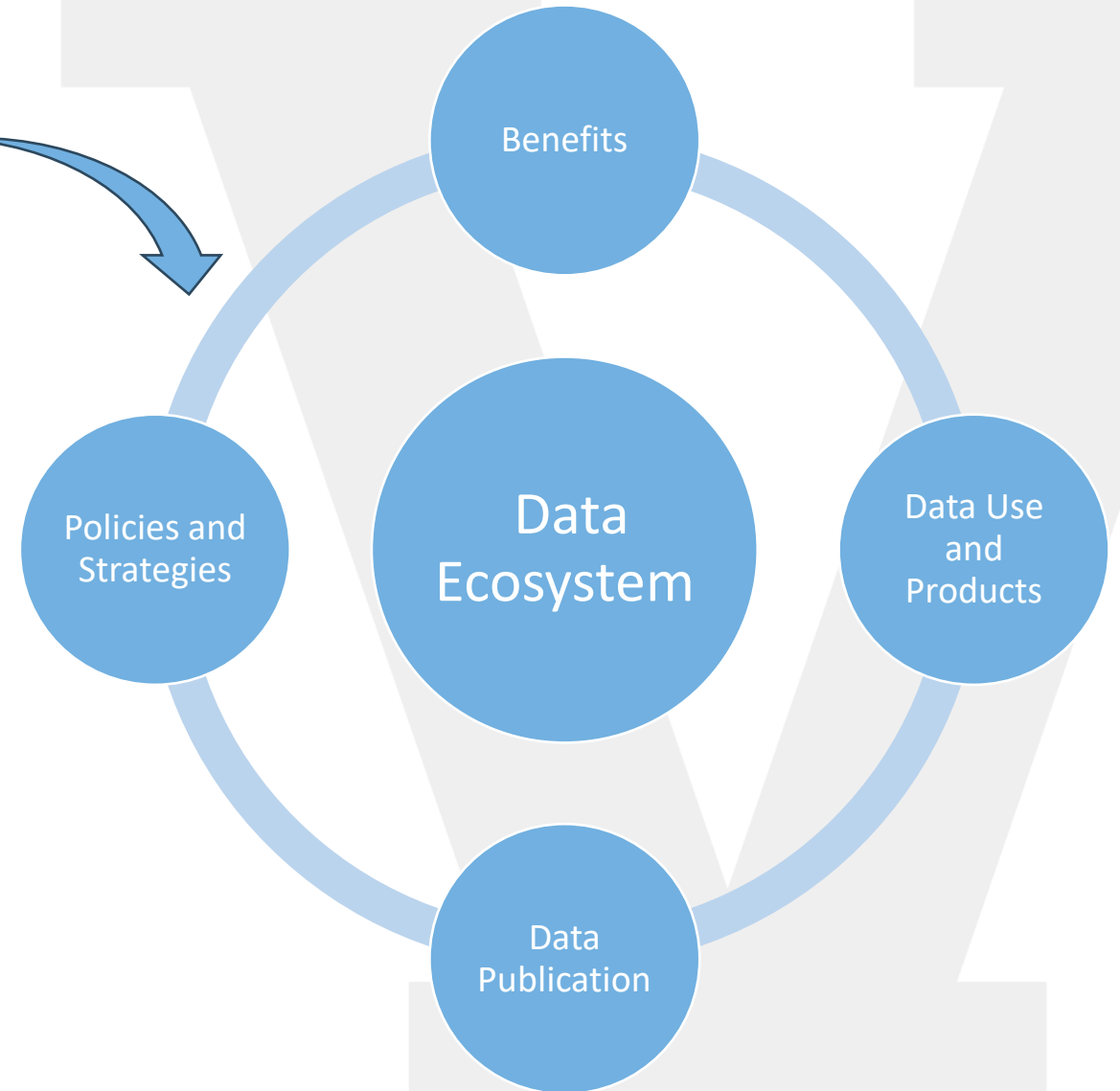
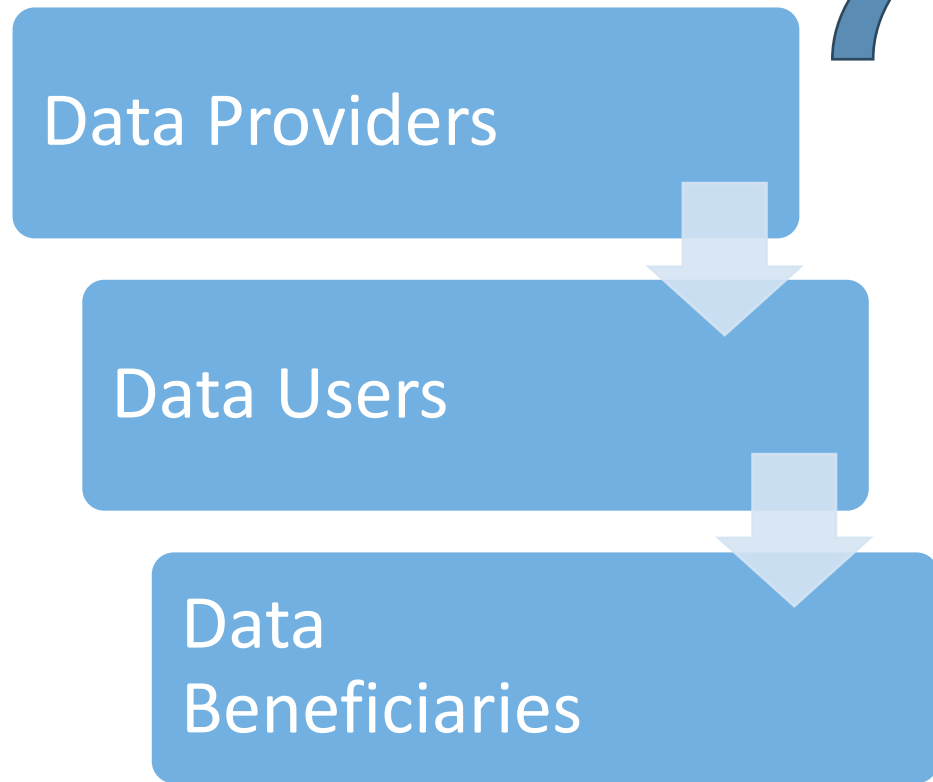




# Data-Driven Problem Solving



# What is a Data Ecosystem?



# What are we trying to do?

Build Vermont's Data Ecosystem through collaboration, education, direct support, and innovative opportunities.

We want to hear from you: what kind of data access, tools, and support are you looking for?

# Questions to Grapple With

How do you currently utilize data in your operations?

How would you **like** to utilize data in your operations?

What types of data would you like to utilize in your operations?

What are some of the primary barriers to using data in your operations?

Complete our paper survey, or do it online!



# Keep in Touch!

Emma Spett: [emma.spett@uvm.edu](mailto:emma.spett@uvm.edu)

[www.uvm.edu/ruralpartnerships](http://www.uvm.edu/ruralpartnerships)

Michael Moser: [Michael.moser@uvm.edu](mailto:Michael.moser@uvm.edu)

[www.uvm.edu/crs](http://www.uvm.edu/crs)

Diana Wahle: [dianawahle@gmail.com](mailto:dianawahle@gmail.com)

[www.vermontcf.org/our-impact/programs-and-funds/con-hogan-award/](http://www.vermontcf.org/our-impact/programs-and-funds/con-hogan-award/)